

## Description

TacTouch TT-S Series low voltage Decorator-style momentary wall switches are an improved version of the traditional low voltage switch that incorporate reliable technology and easy to label pushbuttons into a single gang wall switch box. The TT-S switches are available in one, two, four or six pushbutton configurations in white. Consult TacTouch for other colors. LED in pushbutton illuminates to indicate relay status when connected to pilot light signal from a lighting control panel controller. Finder LED illuminates 24/7 to indicate the location of switch when room is dark when connected to a power source.

## Features

- Momentary push button switch provides user with excellent tactile feel
- Clear switch caps are removable and accept 1/2" x 1/2" transparency with user defined label text - changes are easy!
- Switch cap labels can be changed without removing switch enclosure
- Each switch (except for TT-S6) has low power amber LED for local status
- Uses standard Decorator-style wall plate (not included)
- Fits side-by-side for double & multi-gang box
- Green LED in upper right corner provides locator to help occupants find the switch when lights are off
- Contractor-friendly removable screw terminal block makes installation a snap
- 5 Year Limited Warranty

## Related Products

- TT-G Series switches to control General Electric RR7 or RR9P relays, Wattstopper HDR relays, ILC 2R7 or 2R9 relays.
- TT-K Series switches for applications requiring key lock.
- TT-L Series 0-10 Vdc wall box LED luminaire dimmer.

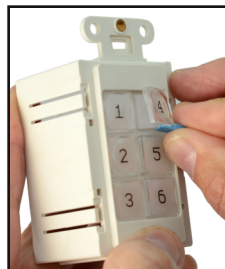


Two Pushbutton, White Option

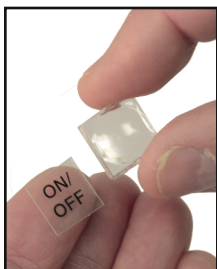


## Labeling is a snap!

**No more long lead times waiting for expensive engraved switches.**



Remove clear cap cover with Cap Puller Tool or small flat blade screw driver.

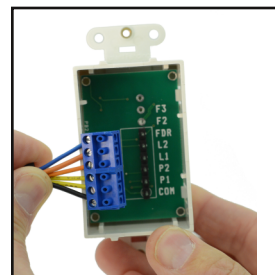


Remove unwanted transparency from clear cap, print desired text on transparency and trim to 1/2" x 1/2" and place in clear cap cover



Snap clear cap back onto switch...quick and simple!

**Electrical contractors prefer the TT-S removable terminal block over the competition**



See our How-To video at: [www.tactouchinc.com/Resources](http://www.tactouchinc.com/Resources)

## Electrical

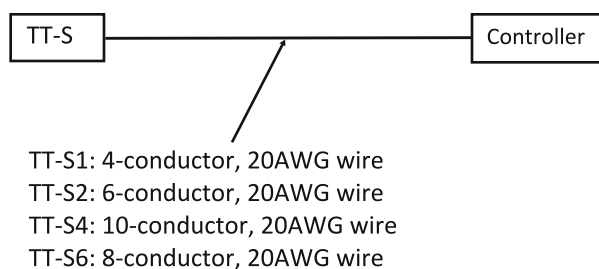
- Momentary switch contact rating: 24VDC, 50mADC.
- Shared common
- Single-pole, single-throw contacts
- Wire size: accepts 18-24 AWG wire.
- Contacts normally open, not interlocked.
- Solid-state momentary switch rated for 1,000,000 activations
- LED rated for 100,000 operating hours.
- LED current requirement: 0.01A
- LED voltage requirement: +12-24VDC

## Environmental

- Operating Temperature 32-158 Deg. F, 0-70 Deg. C
- 10 - 90% Relative Humidity, non-condensing
- For Indoor Use

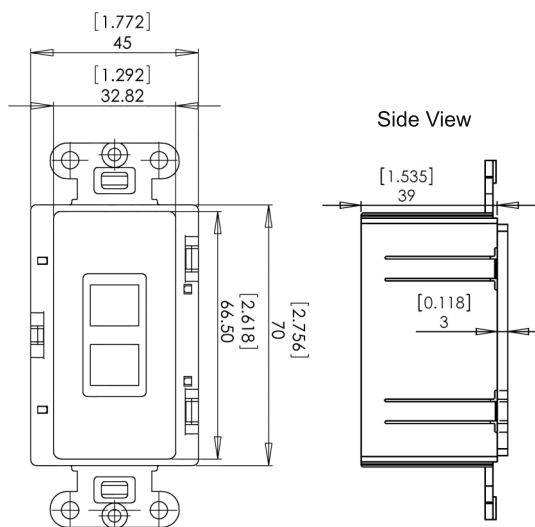
## Wiring

### One Line Diagram

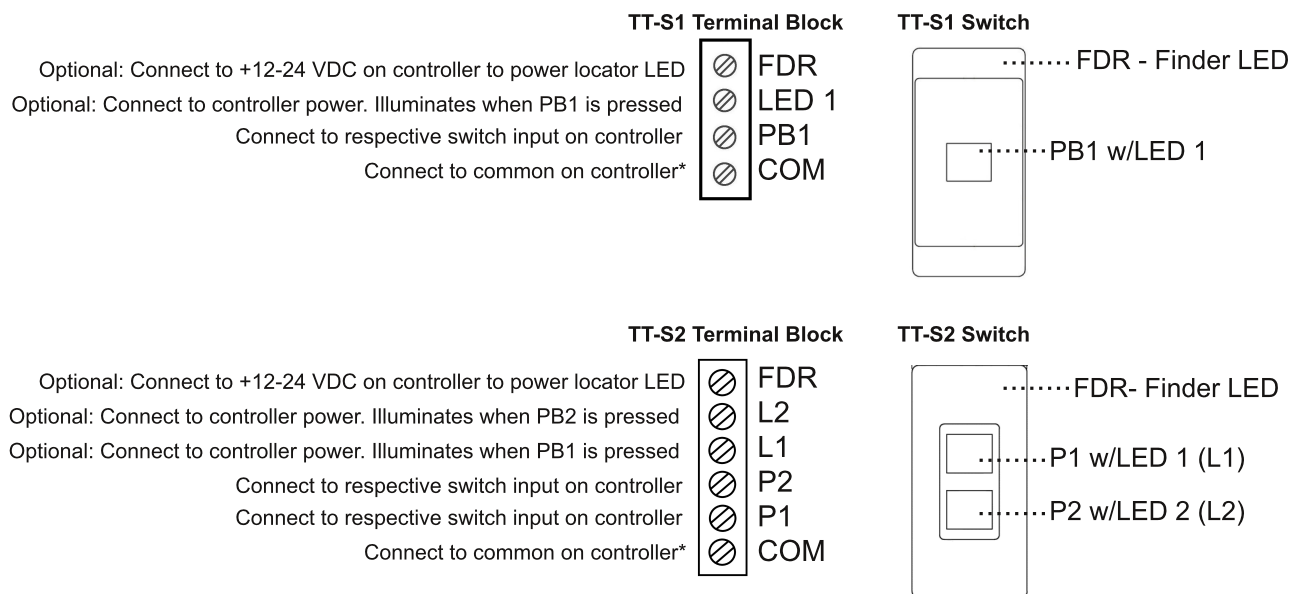


## Mechanical

Dimensions same for TT-S1, TT-S2, TT-S4 and TT-S6



### Terminal Block Wiring Connections

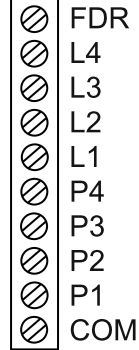


#### TT-S4 Terminal Block

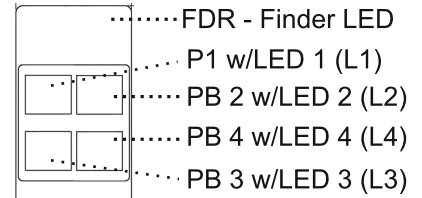
Optional: Connect to +12-24 VDC on controller to power locator LED  
 Optional: Connect to controller power. Illuminates when PB4 is pressed  
 Optional: Connect to controller power. Illuminates when PB3 is pressed  
 Optional: Connect to controller power. Illuminates when PB2 is pressed  
 Optional: Connect to controller power. Illuminates when PB1 is pressed

Connect to respective switch input on controller  
 Connect to respective switch input on controller  
 Connect to respective switch input on controller  
 Connect to respective switch input on controller

Connect to common on controller\*



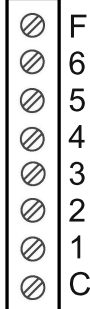
#### TT-S4 Switch



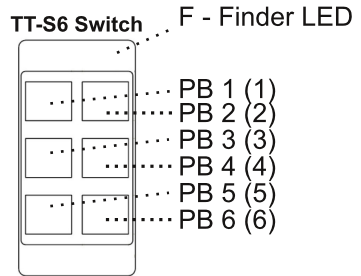
#### TT-S6 Terminal Block\*\*

Optional: Connect to +12-24 VDC on controller to power locator LED  
 Connect to respective switch input on controller  
 Connect to respective switch input on controller  
 Connect to respective switch input on controller  
 Connect to respective switch input on controller  
 Connect to respective switch input on controller  
 Connect to respective switch input on controller

Connect to common on controller\*



#### TT-S6 Switch



\* Common for Finder LED, Switch LED (LED #) and Pushbutton Switch (PB #)

\*\* TT-S6 is not available with PB LED's

#### Ordering Instructions

#### Example: TT-S2-W

TT-S\_ (# of Pushbuttons/LEDs) - \_ (Color) Call for other color options

- 1 W = White  
 2  
 4  
 6

**TacTouch, Inc.**  
 Innovative Push Button Control