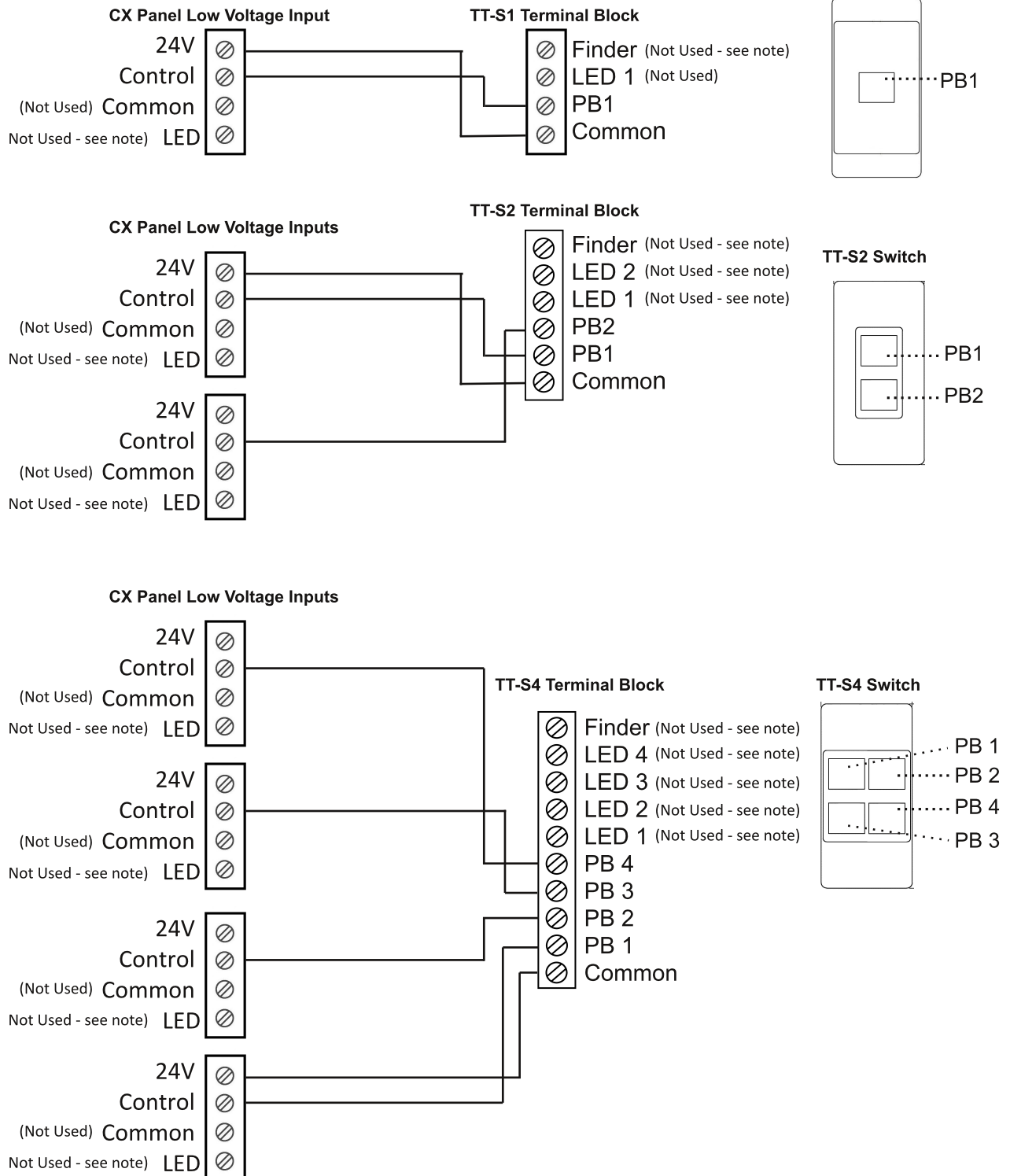
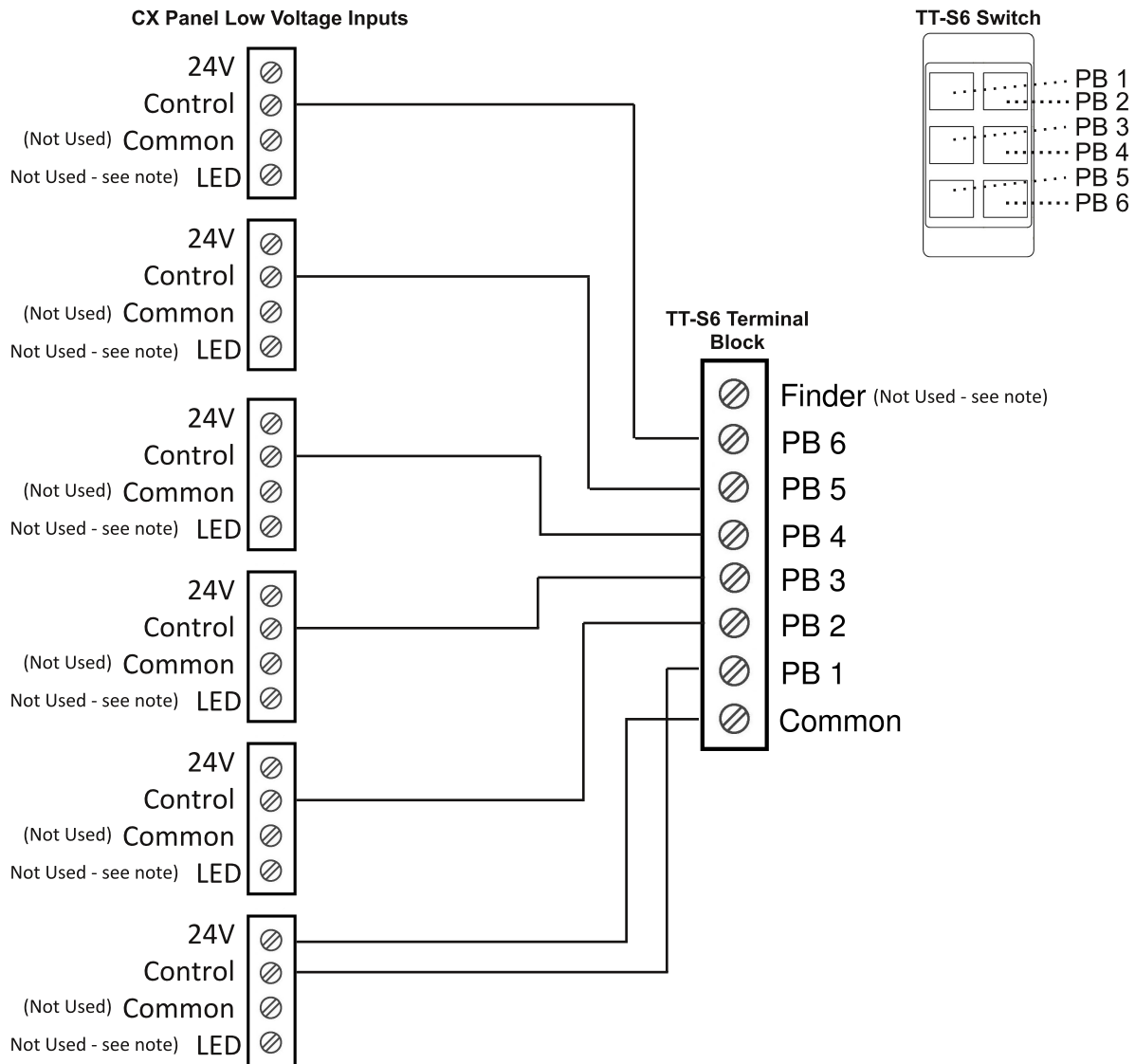


Note: How to connect TT-S and TT-K to CX Relay Panels for applications that do not require LED indicators.
For applications that require LED indicators, please refer to TT-H wiring diagram.

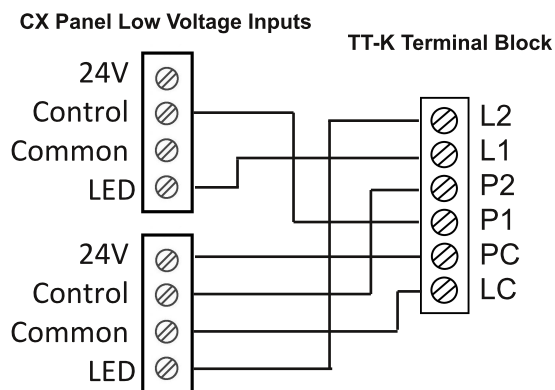
TT-S Series Wiring Connections



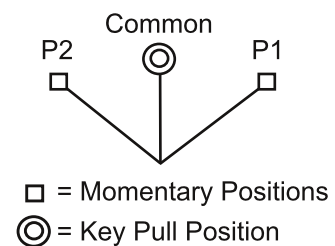
Disclaimer- Wiring diagrams contained in this document are subject to change. Verify connections with manufacture prior to purchase and installation of TacTouch switches.



TT-K Series Key Switch Wiring Connections



TT-K Lock Configuration



Disclaimer- Wiring diagrams contained in this document are subject to change. Verify connections with manufacture prior to purchase and installation of TacTouch switches.